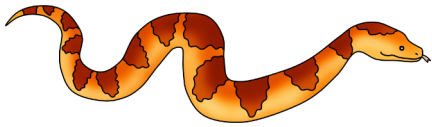


Hibernating Animals

Can you circle the correct animal group for each animal?



Mammal, reptile, fish, bird,
amphibian, insect.



Mammal, reptile, fish, bird,
amphibian, insect.



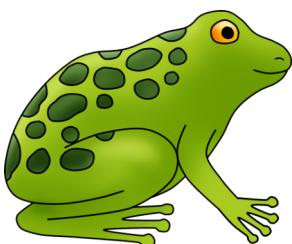
Mammal, reptile, fish, bird,
amphibian, insect.



Mammal, reptile, fish, bird,
amphibian, insect.



Mammal, reptile, fish, bird,
amphibian, insect.



Mammal, reptile, fish, bird,
amphibian, insect.